

# CERVANTES OTHER SIDE TECHNICAL SPECIFICATIONS



# CERVANTES MASTERPIECE BALLROOM & THE OTHER SIDE

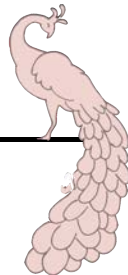
## A BRIEF HISTORY

Dubbed the “Harlem of the West,” historic Five Points was a vibrant African-American community with over 50 bars and clubs in its heyday for the 1920's - 1960's. One of the “Welton Strips” most notable club owners was Benny Hooper. Hooper’s Ex-Servicemen’s Club, now The Other Side, was described as “the hottest Jazz spot in the West. Musicians, black and white, gather there until the wee hours of the morning exchanging musical ideas.” He hosted concerts in the clubs basement, affectionately known as “The Hole.” The club was famous for Sunday night jam fests that laid the foundation for many local Jazzmen by pairing them with well-known traveling musicians. When people wanted to dance they went next door to Hooper’s other club, the Casino Ballroom, with it’s large dance floor and 40-foot bar. At the time, it was the largest and most luxurious of all the Five Points Jazz clubs. During the good years, the Casino swung to the music of Louis Armstrong, Charlie Parker, Billie Holiday, Duke Ellington, Nat King Cole, Count Basie, Ella Fitzgerald, Dinah Washington, Miles Davis, Brook Benton, James Brown, Ray Charles, Fats Domino, George Morrison and Muddy Waters. Since 2003, Cervantes’ Masterpiece Ballroom has proudly carried on Benny Hooper’s legacy of bringing live music to Five Points.



**Benny Hooper**





---

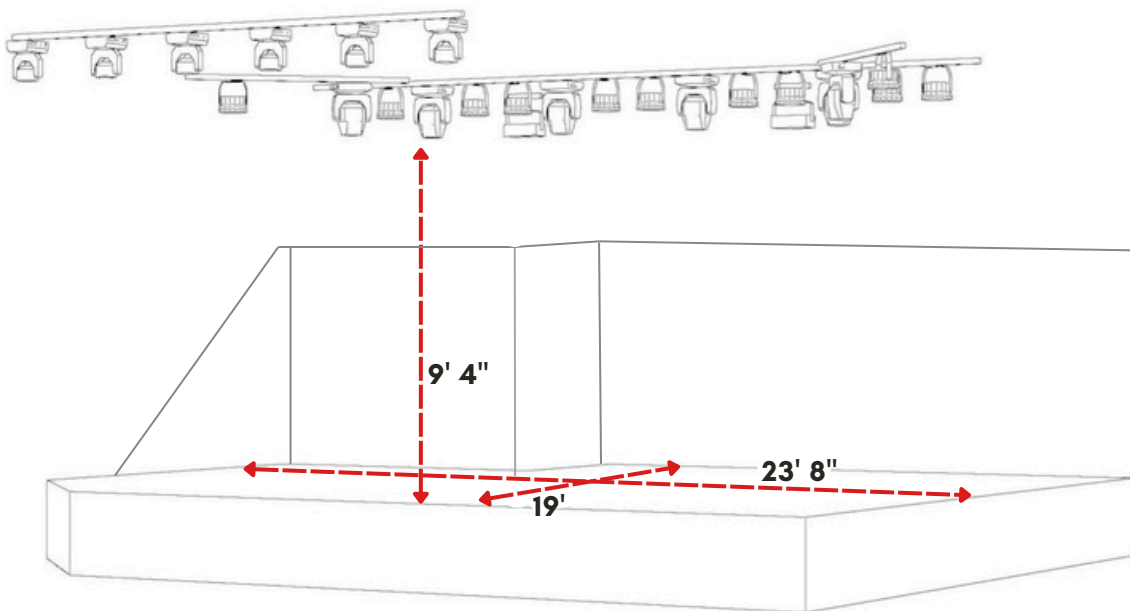
## OTHER SIDE STAGE DIMENSIONS

**Length of Stage** - 19' [upstage to downstage]

**Width of Stage** - 23' 8" [stage left to stage right]

**Height of Stage** - 9' 4" [max height]

\*\* The Other Side stage has chandeliers and pipes in the ceiling that hinders height in certain areas



---

## AUDIO SPECIFICATIONS

- **Main PA** - x6 d&b audiotechnik, Q1 Loudspeaker, (6 Per Side)
  - **Main PA Subs** - x2 d&b audiotechnik, J-SUB Subwoofer - Underneath Stage (Across Front)
  - **Flown Center Fill** - x1 d&b audiotechnik, E12 Loudspeaker
  - **Flown House Left Delay** - x1 d&b audiotechnik, E12 Loudspeaker (focused just past entrance & bar area)
  - **Flown Rear Delay** - x1 d&b audiotechnik E12 Loudspeakers (focused on rear of the room)
  - **Amplification** - x2 d&b audiotechnik D12 x2 ch amplifiers (powering mains and subs)
  - **Center Fill Amplification** - x1 d&b audiotechnik D6 x4 ch amplifier
  - **Delay Amplification** - x1 d&b audiotechnik 40D x4 ch amplifier
  - **all amplifiers are networked via R1 software at FOH.**
-

---

# AUDIO

## CONSOLES

- **FOH Console** - Avid SC48 - Avid Plugins Package

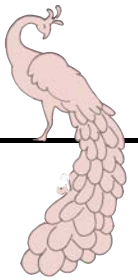
## MONITORS, SUB-SNAKES

\*\* **Monitors are run via FOH console at the Other Side**

- **Floor Wedges**
  - x6 EAW MW12's, Passive
  - x2 EAW MW15's, Passive
  - All powered via x5 QSC Audio RMX 1850HD
- **Main Audio Split Snake** - 48 in / 8 out analog/copper snake direct to FOH
- **Sub Snakes**
  - x1 30ft 20ch
  - x1 25ft 16ch
  - x1 10ft 12ch
- **Guest Drive Lines** - x4 L, R, SUB, Fill

## AUDIO POWER

- x8 isolated 20amp audio circuits
- 



---

# LIGHTING

## CONSOLES

- x1 GrandMA2 - Command Wing
- x1 AvoLites Titan Mobile
- x1 AvoLites T3
- House lighting consoles float between both of our venues. If you have a preference, it must be advanced before show day

## DATA & POWER

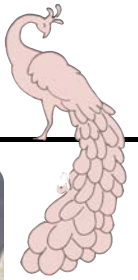
- x1 3-pin DMX universe [house rig]
- x1 3-pin DMX universe [guest lines]
- x2 RJ45 Shielded CAT lines
- x5 isolated 20amp lighting circuits

PLEASE NOTE: There is no 100amp 3 phase service lines for distros in the Other Side

**Full lighting plot and patch sheet on the following pages**

---

# LOAD IN & PARKING

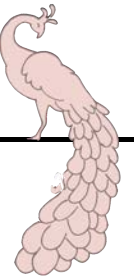


## PARKING / LOAD-IN PROCEDURE

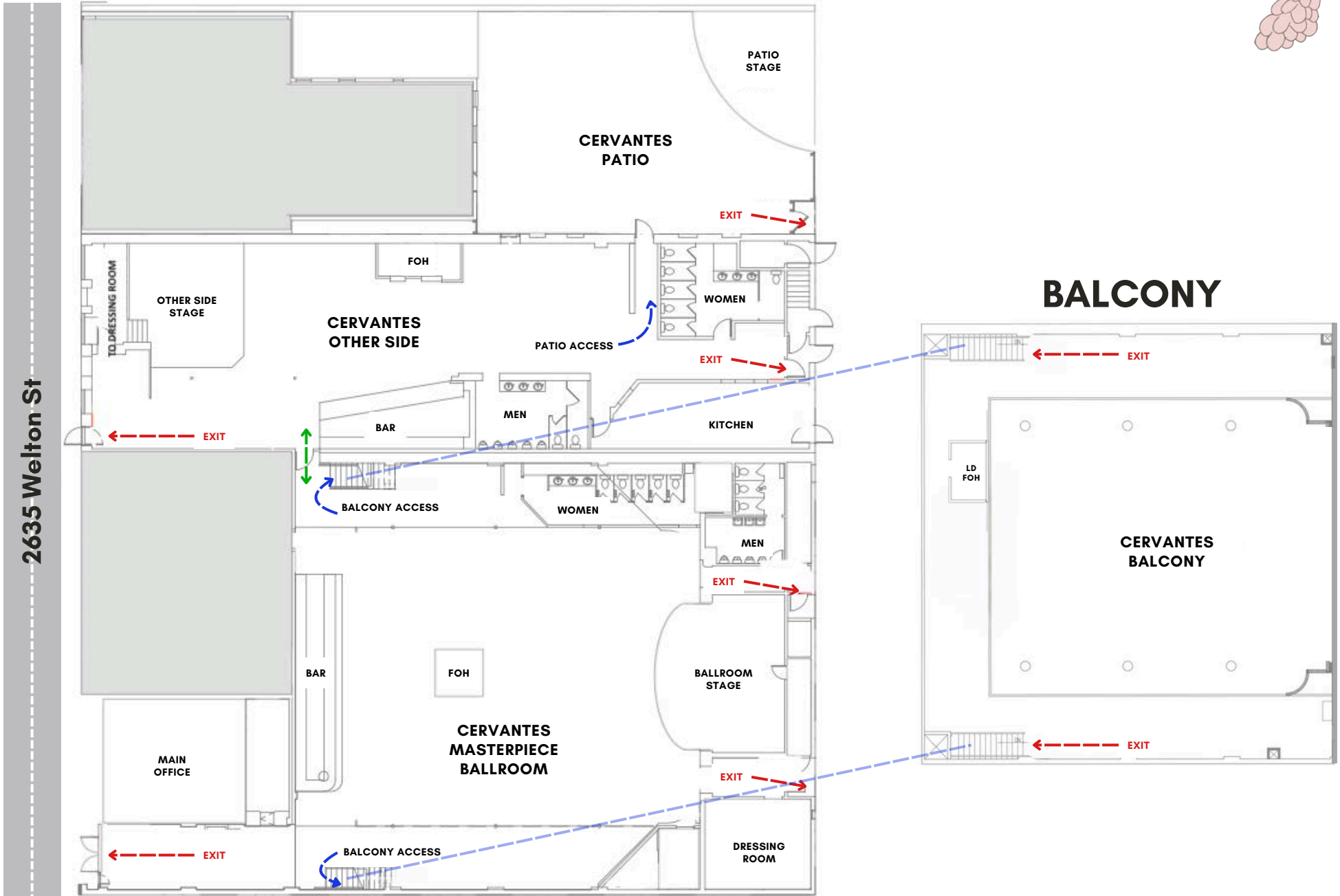
Cervantes' load-in is a flat, easy, 150' push from the street to the stage. Best parking option is directly in front of the venue, on Welton St. The meters are active until 6pm each day, for \$1/hr, then free.

**Please advance Buses & Large Vehicles with Production Manager - there is no shore power available.**

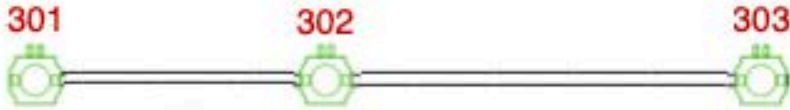
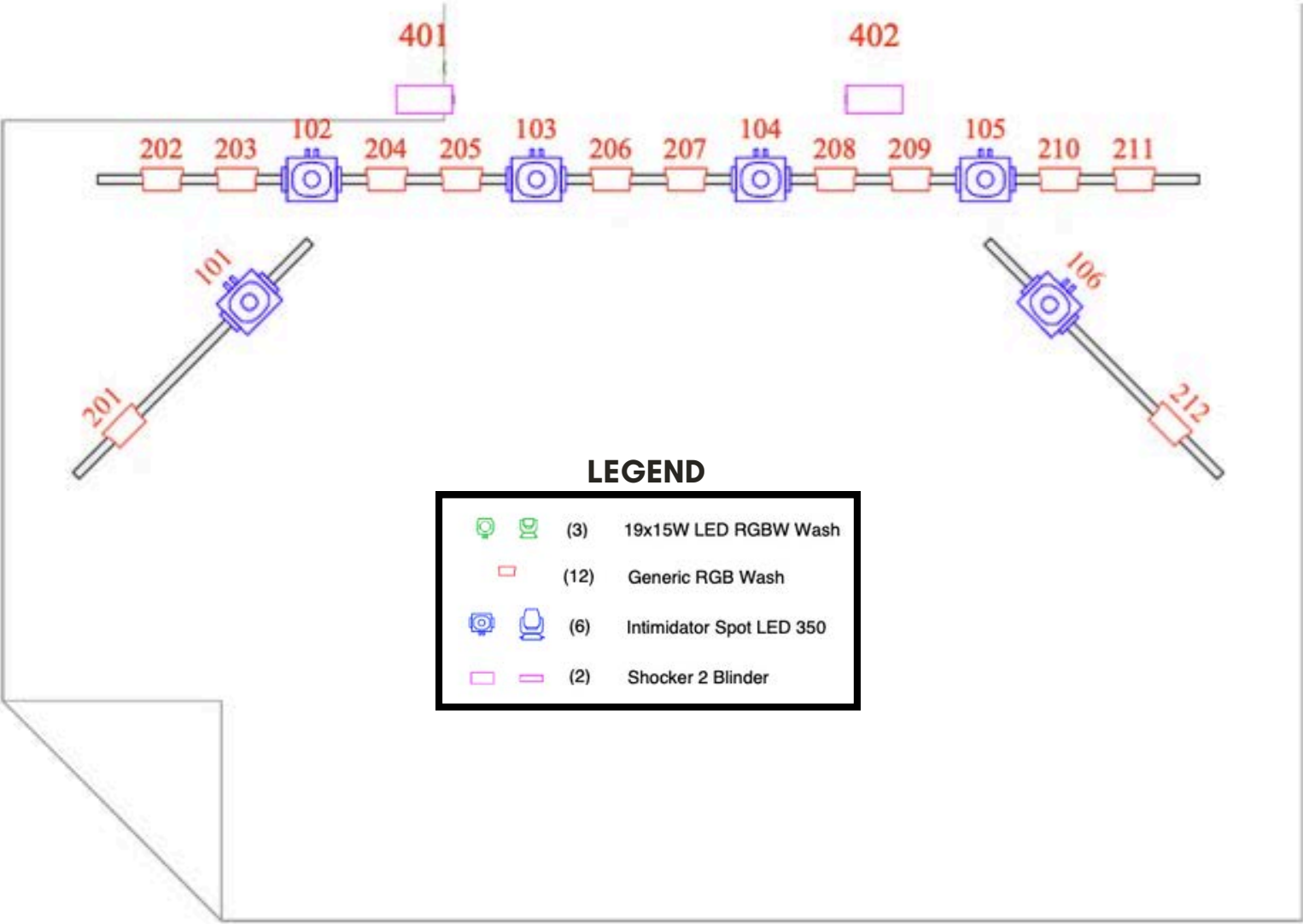
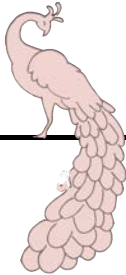
# FLOOR PLAN



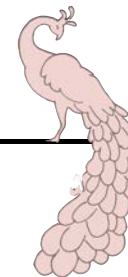
## MAIN FLOOR



# OTHER SIDE LIGHTING PLOT



# OTHER SIDE LIGHTING PATCH



Fixture ID	Fixture Type	Mode	Address	Location
101	Chauvet Intimidator Spot LED 350	14 ch	1.201	US
102	Chauvet Intimidator Spot LED 350	14 ch	1.215	US
103	Chauvet Intimidator Spot LED 350	14 ch	1.299	US
104	Chauvet Intimidator Spot LED 350	14 ch	1.243	US
105	Chauvet Intimidator Spot LED 350	14 ch	1.257	US
106	Chauvet Intimidator Spot LED 350	14 ch	1.271	US
201	Generic LED	6 ch - IRGB-ColorMacro-Shutter	1.046	US
202	Generic LED	6 ch - IRGB-ColorMacro-Shutter	1.052	US
203	Generic LED	6 ch - IRGB-ColorMacro-Shutter	1.058	US
204	Generic LED	6 ch - IRGB-ColorMacro-Shutter	1.064	US
205	Generic LED	6 ch - IRGB-ColorMacro-Shutter	1.070	US
206	Generic LED	6 ch - IRGB-ColorMacro-Shutter	1.076	US
207	Generic LED	6 ch - IRGB-ColorMacro-Shutter	1.082	US
208	Generic LED	6 ch - IRGB-ColorMacro-Shutter	1.088	US
209	Generic LED	6 ch - IRGB-ColorMacro-Shutter	1.094	US
210	Generic LED	6 ch - IRGB-ColorMacro-Shutter	1.100	US
211	Generic LED	6 ch - IRGB-ColorMacro-Shutter	1.106	US
212	Generic LED	6 ch - IRGB-ColorMacro-Shutter	1.112	US
301	SHEHDS 19x15W LED RGBW Wash Zoom	24 ch Extended	1.300	DS
302	SHEHDS 19x15W LED RGBW Wash Zoom	24 ch Extended	1.324	DS
303	SHEHDS 19x15W LED RGBW Wash Zoom	24 ch Extended	1.348	DS
401	Chauvet Shocker 2 - 2 cell blinder	2 ch	1.150	US
402	Chauvet Shocker 2 - 2 cell blinder	2 ch	1.152	US
501	Ultratec Radiance Hazer	2 ch	1.511	FOH